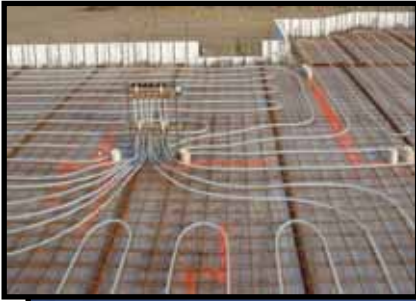


INTEGRASPEC[®]

"The User Friendly ICF"



FEATURE PROJECT



Project: Brealey Residence

Perth, Ontario

Designer: Lagois Drafting Inc.

North Gower, Ontario

ICF Distributor: IntegraSpec Rideau

Westport, Ontario

Contractor: Teixeira Construction Inc.
(Three time R-2000 Award Winner)

Portland, Ontario

Features: IntegraSpec[®] wallsystem foundation and main floor level. Radiant heated concrete floors on both levels. R-2000 EnerQuality Corporation, Environmental Excellence Award Winner, 2000. Cement Association of Canada, National Outstanding Energy Efficiency Award, 2001. Canadian Home Builders Association EnviroHome Award. CMHC Healthy Home Award.

Benefits: The EnerQuality Corporation reports this 1920 ft² bungalow to be 61% more heat efficient than conventionally built houses, and 45% more heat efficient than R-2000 targets. These results make this the most energy efficient home in Canada. The awards were based on an amazing air test performance of .55 air exchanges per hour in concert with IntegraSpec[®] wallsystem's insulated thermal mass. IntegraSpec[®]'s unique design also controlled waste on site and provided superior indoor air quality. IntegraSpec[®] is "Green Product" and "Healthy Home" recognized. Given these impressive consumer advantages, the Contractor further notes:

"IntegraSpec[®]'s patented design makes every step easier, including transportation, site storage, layout, setup, concrete placement, alignment, interior and exterior finishing. IntegraSpec really is the strongest ICF".

*- John Teixeira
Teixeira Construction Inc.*



Specify Integrity in your next project:

Please visit us at www.integraspec.com

