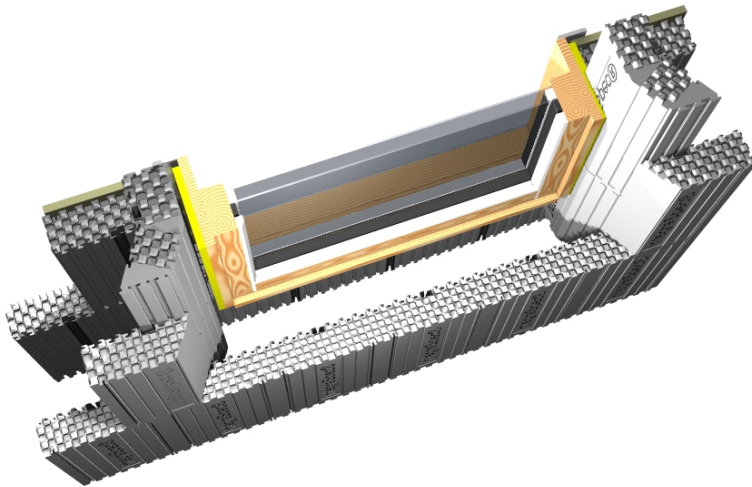




“Santa Fe” Product Line

Mr. Michel Philippe, President, IntegraSpec ICF announces the successful Design and Production of Santa Fe IntegraBuck ICF Products. These exciting new products are available from all six IntegraSpec facilities in 6" and 8" concrete core thickness.



6" and 8" Santa Fe IntegraHeader

“The Santa Fe IntegraBuck Series is a direct result of requests from the field.”

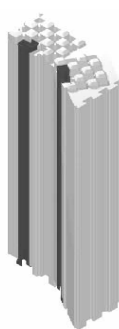
The success of the original IntegraBuck Series, introduced in 2003, was overwhelming. The strength, versatility, insulating value, and zero waste, combined with the Best Installed Cost of any ICF window bucking system in the market were determining factors in the immediate success.

The IntegraBuck system is 2.5" thick and install into the dovetailed grooved concrete face of IntegraSpec ICF. The designed result is an insulated, one material substrate with furring strips that is incredibly “stucco friendly”.

The Santa Fe IntegraBuck products have two 1 5/8" furring strips and have IntegraSpec's dovetailed grooves on the concrete face. The Santa Fe IntegraBucks and IntegraHeaders have 30° angles that provide increased viewing, sills, and door operating opportunities.

"The LEED Architectural Design possibilities with these products are endless. Their use will add two LEED points to your project", Mr. Doug Canoose, LEED Accredited Professional.

IntegraSpec ICF products are Patent Protected.
IntegraSpec Santa Fe IntegraBuck and IntegraHeader products Patent Pending Worldwide.



6" Santa Fe IntegraBuck



8" Santa Fe IntegraBuck