

# SECTION 12

TYPICAL INTEGRASPEC WALL TO ROOF LINE, WITH PARAPET AND ENGINEERED CONCRETE FLOOR SYSTEM

**IntegraSpec**<sup>®</sup>  
 .COM  
*The User Friendly ICF*  
**Insulating Concrete Forms**



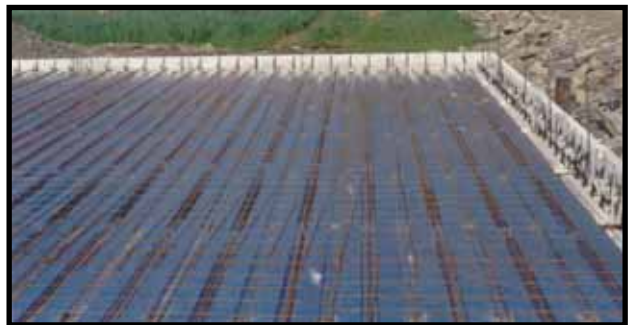




# INTEGRASPEC<sup>®</sup>

"The User Friendly ICF"

## IntegraDecks - Steel Joist / Pan



Specify *Integrity* in your next project:

Please visit us at [www.integraspec.com](http://www.integraspec.com)

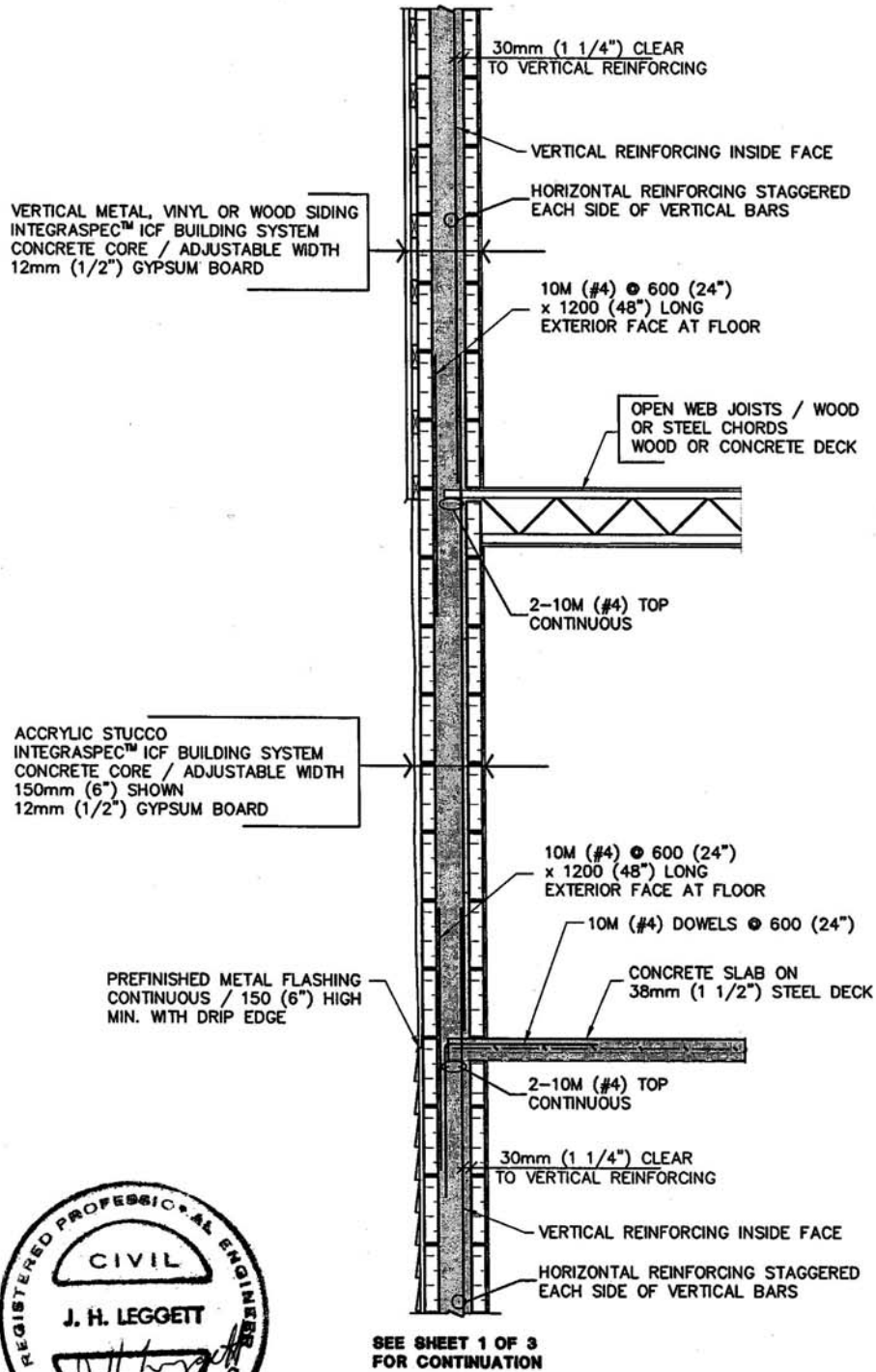








SEE SHEET 3 OF 3  
FOR CONTINUATION



SEE SHEET 1 OF 3  
FOR CONTINUATION



SEE SHEET 3 OF 3 FOR NOTES

Project:		Project No. 1635-13
<b>INTEGRASPEC™ ICF WALL SYSTEM</b>	Adjeleian Allen Rubeli Limited Consulting Engineers 75 Albert street Ottawa, Ontario	Scale: 1 : 20
		Date: AUG. 2003
		Sheet <b>2 OF 3</b>











ICF

ICF







*Thank you*



**IntegraSpec®**  
.COM  
*The User Friendly ICF*  
**Insulating Concrete Forms**  
By PHIL-IMBOL CORPORATION